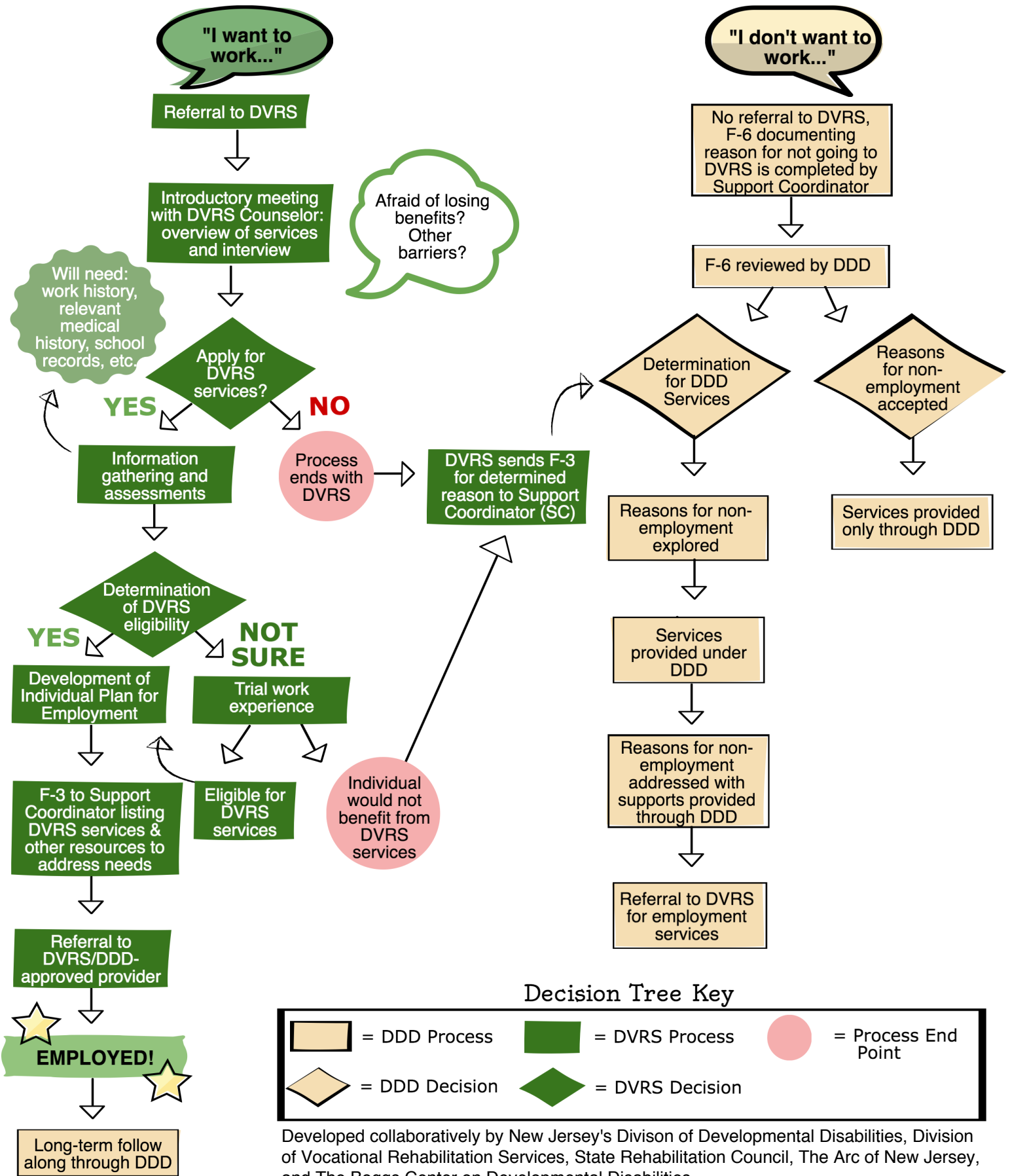


# Employment Decision Tree for DDD-Eligible Individuals

This decision tree displays the path to employment services for individuals that are eligible for DDD. If determined eligible for DDD services, supports can be provided by DDD throughout the employment decision process.



**Decision Tree Key**

	= DDD Process		= DVRS Process		= Process End Point
	= DDD Decision		= DVRS Decision		

Developed collaboratively by New Jersey's Division of Developmental Disabilities, Division of Vocational Rehabilitation Services, State Rehabilitation Council, The Arc of New Jersey, and The Boggs Center on Developmental Disabilities.